

PRODUCT DATA SHEET

PAINTED FRAME WORK

All Heatex exchangers are available with powder painted frame work for ultimate protection.

Painted frame work includes sealed joints in the frame work, which we recommend for very wet and humid applications.

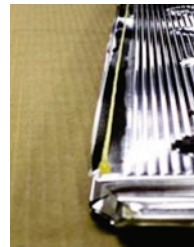
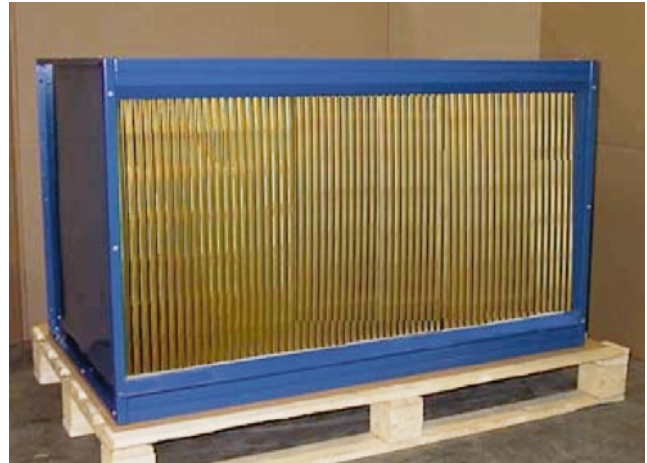
EPOXY COATED PLATES

All Heatex aluminium exchangers are available with epoxy coated aluminium plates for improved corrosion resistance at demanding situations, such as swimming pool and coastal environments.

For highest protection one may add sealed cutting combined with a edges, which is the same procedure as below described extra sealed channels.

CLOSED PLATE CUTTING EDGES

For best possible protection against corrosion one may add this option where a lacquer is run along the joints of the plates, covering the cutting edges found on epoxy coated plates. This action may also improve the already high tightness of the exchanger and limit leakage to a minium. Do note, that the exchanger will never reach a 100% water tightness.



The standard channel tightness is achieved with a hot melt sealant mechanical folding. If necessary this can be improved by extra sealing with lacquer.



EXTENDED FRAME WORK

Heatex exchangers are available with or without bypass and with or without damper.

Heatex can also supply custom made extended frame works, with possible integration of bypass, damper, and drip tray with drainage tubes for condense water.

Extended frame work promotes quick assembly of air handling units.

The extended frame works are made in aluzinc sheeting, and may on request be powder painted.

All extended frame works are custom made and offered according to your special requirements.

Owing to continued product development Heatex AB reserves the right to introduce alternations both in design and prices without prior notice.

Heatex AB

Tommarpsvägen 46, SE-231 65 Trelleborg, Sweden
Phone: +46 410 71 05 00, Fax: +46 410 71 05 29
Internet: www.heatex.com

2005-10-31